



117, Gloucester Place,
, W1U

Asking Price £9,000,000, Freehold

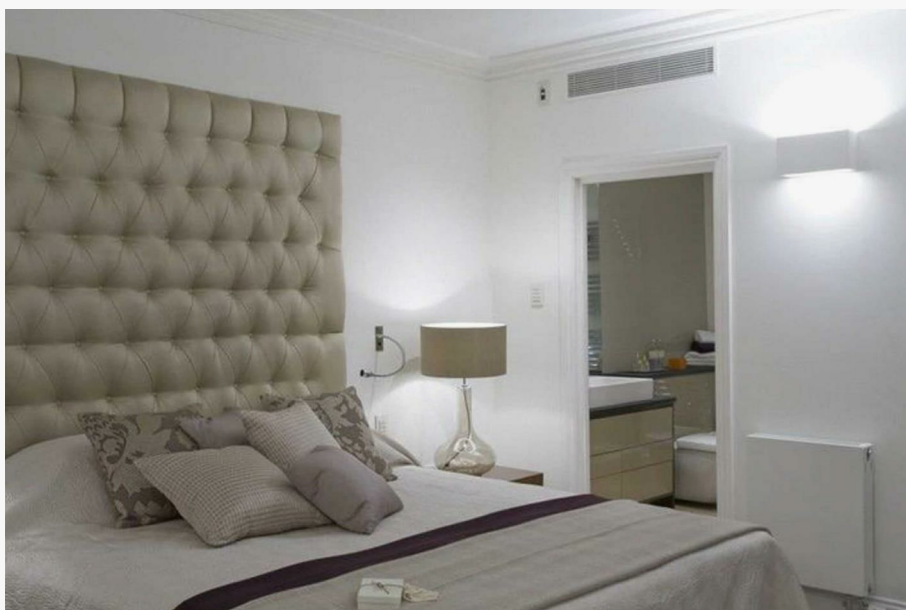
NAPIER WATT

T: 0207 935 0011
E: enquiries@napierwatt.co.uk
W: napierwatt.co.uk

35 Berkeley Square, Mayfair, London, W1J 5BF







Description

An impressive Grade II listed Freehold House in Marylebone, currently configured as 5 self-contained luxury apartments, arranged over lower ground to fourth floors.

All the apartments benefit from direct lift access. The property extends to a gross 8,265 sqft / 768 sqm & are in excellent condition.

Council Tax band: E, G, H.

Key Features

Terms

An impressive Grade II listed Freehold house in Marylebone, currently configured as 5 self-contained luxury apartments, arranged over lower ground to fourth floors. All the apartments benefit from direct lift access. The property extends to a gross 8,265 sqft 768 sqm & are in excellent condition. The property is currently let and produces an approximate gross rental income of £348,790 pa



IMPORTANT: We would inform prospective purchasers that these sales particulars have been prepared as a general guide only. A detailed survey has not been carried out, nor the services, appliances and fittings tested. Room sizes should not be relied upon for furnishing purposes and are approximate. If floor plans are included, they are for guidance only and illustration purposes only and may not be to scale. If there are any important matters likely to affect your decision to buy, please contact us before viewing the property.